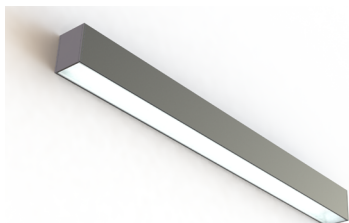


MARK ARCHITECTURAL LIGHTING™



Slot 4 LED Direct or Indirect Wall

The Slot LED family of luminaires offers an unparalleled package of performance and features for your next lighting project. Our complete set includes two aperture sizes, three mounting types, three lighting distributions and six fixture lengths. Precision lumen DIRECTIR optics deliver optimized light where needed and are available in standard and high lumen outputs. With other key features such as simplified installation, seamless controls integration and superior color and quality, the Slot LED family from Mark Lighting offers exceptional quality and design flexibility.

Type:

Project:

Catalog Number:

DO NOT TYPE HERE. Autopopulated field.

Specification Features (continued on page 2)

Housing

Nominal 3.5" x 3.75" extruded aluminum housing

Finish

White, Black or Silver powdercoat

Reflector

Extruded aluminum with high reflectance white powdercoat

Fixture Performance

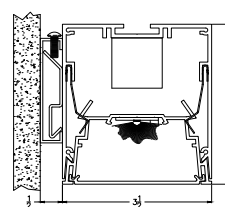
4FT INDIVIDUAL (35K)	DIRECT		INDIRECT	
Lumens Output	Normal	High	Normal	High
Delivered Lumens	2,299	4,598	2,854	5,708
Input Watts	28	56	26	56
Lumen/Watt	82	82	102	102

* Consult factory for customized lumen output and wattage

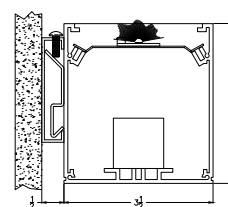
Shielding

Extruded 90% transmissive acrylic lens with a textured surface providing diffuse illumination and a uniform appearance for direct lambertian distribution (No Optics). Straight blade louver shield supplied for Wall Graze (WG) distribution. Louver will be painted to match housing. Clear Acrylic dustcover (DC) is available for the indirect distribution only.

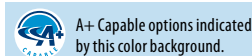
Technical Drawing



Direct Wall Mount



Indirect Wall Mount



A+ Capable options indicated by this color background.

Ordering

Example: S4LWD 4FT 1N35WG EZB 120 WHT EMPK

Series		Length		Distribution Type		Lumens		Color Temp		Optics		Driver		Voltage		Finish		Controls												
S4LWD	Direct Wall	2FT	2'	1	Direct Distribution	N	Normal Output	30	3000K ≥80 CRI	(Blank)	No Optics	EOHN	Non-dimming	120	WHT	White	MSD9N ⁴	PIR & Microphonics Occupancy Sensor with 360° Coverage - ON/OFF Control												
	S4LWI	Indirect Wall	3FT	3'	2	Indirect Distribution	H	High Output	35	3500K ≥80 CRI+	WG ¹	Wall Graze Distribution	EZB	Constant current, 0 - 10V, 0.1% dimming to off For other options see page2	277	BLK	Black	DSCC ⁴	Closed loop photocell with continuous dimming											
4FT		4'																												
5FT		5'																												
6FT		6'																												
7FT		7'																												
8FT		8'																												
		_FT																												
											</																			

Notes:

- WG optics available with Type 1 Direct distributions only, with straight blade louver shielding.
- AS optic and DC dustcover options are available with Type 2 indirect distribution ONLY.
- Consult factory for 347V.
- Occupancy and Photocells are supplied at one end of an individual unit. Requires external power pack or connection to nLight network.
- Remote mounted; consult factory for remote mounting options. Battery Pack will only light 12" section.



eldoLED
your product | our drive



Specification Features (continued)

LED Components

Linear: Nichia®- 757 series LED chips (>80 CRI)

LED Life

Rated 55,000 hours (L80) at 25° C ambient temperature.

Color Consistency

The Acuity Brands circuit boards for the linear LED components use a precise binning algorithm which creates a consistent color temperature from board to board. The color a variation of no greater than a 2.5 Step MacAdam (2.5SDCM) along the black body locus from board to board.

Driver

eldoLED constant current driver options deliver choice of dimming range for ultra-smooth dimming resolution from 100% to less than 1% , and choices for control, while assuring flicker free, low current inrush, 89% efficiency and low EMI.

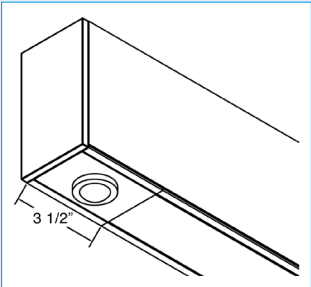
Slot LED Drivers

Driver Options	Dimming Protocol	Dimming Range	Integrated Controls
EOHN	Non-dimming	----	----
EZB	0 -10v	100 to 0.1%	----
EDAB	Dali	100 to 0.1%	----
ENCB*	0 -10v	100 to 0.1%	nLight
ENNB*	0 -10v	100 to 0.1%	nLight with generator supplied EM power
EESB*	0 -10v	100 to 0.1%	Lutron EcoSystem interface

*Integral driver with remote mounted nLight or EcoSystem interface, consult factory for mounting options.

Integrated Controls

Optional nLight® integrated controls make Slot LED luminaires addressable-allowing them to digitally communicate with other nLight enabled controls such as dimmers, switches, occupancy sensors and photocontrols. Simply connect all the nLight enabled control devices using standard CAT5 Cabling.



Occupancy Sensor (MSD9N) and/or Photocell (DSCC)

A+ Capable Luminaire

This item is an A+ capable luminaire, which has been designed and tested to provide consistent color appearance and out-of-the-box control compatibility with simple commissioning.

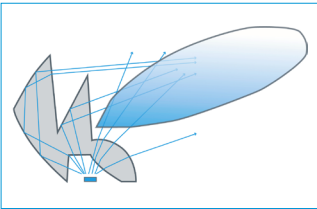
- All configurations of this luminaire meet the Acuity Brands' specification for chromatic consistency
- This luminaire is part of an A+ Certified solution for nLight® control networks when ordered with drivers marked by a shaded background*
- This luminaire is part of an A+ Certified solution for nLight control networks, providing advanced control functionality at the luminaire level, when selection includes driver and control options marked by a shaded background*

To learn more about A+, visit www.acuitybrands.com/aplus.

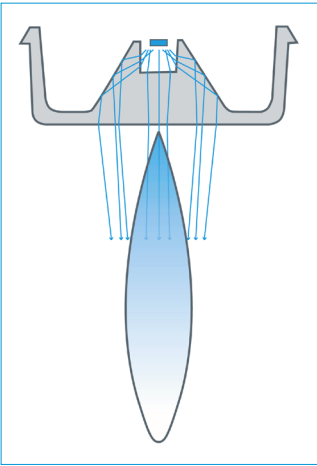
*See ordering tree for details

Optics

Slot LED's patent-pending, precision lumen DIRECTIR optics condition and refract light to deliver accurately controlled, striation-free, and uniform white light. All lumen DIRECTIR optics are injection-molded, optical grade, UV-resistant acrylic with selective finishing/polishing treatment.



Asymmetric (half batwing) (AS)



Wall Graze (WG)

Certification

CSA Certified to meet U.S. and Canadian standards, assembled in the USA.

Warranty

5-year limited warranty. Complete warranty terms located at: www.acuitybrands.com/CustomerResources/Terms_and_conditions.aspx

Note: Actual performance may differ as a result of end-user environment and application.

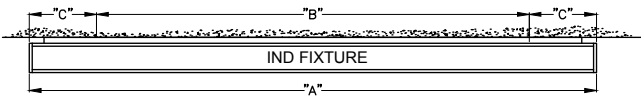
All values are design or typical values, measured under laboratory conditions at 25 °C.

Specifications subject to change without notice.

Photometry

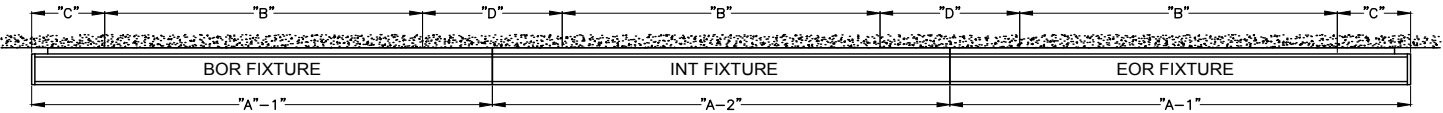
For photometric information refer to www.marklighting.com.

Individual Fixture Configurations



INDIVIDUAL UNITS (MOUNTING)			
LENGTH	"A" O.A.L.	"B" FEED POINTS	"C" FROM END
2FT	2'-0 1/2"	1'-1"	5 3/4"
3FT	3'-0 1/2"	2'-1"	5 3/4"
4FT	4'-0 1/2"	3'-1"	5 3/4"
5FT	5'-0 1/2"	4'-1"	5 3/4"
6FT	6'-0 1/2"	5'-1"	5 3/4"
7FT	7'-0 1/2"	6'-1"	5 3/4"
8FT	8'-0 1/2"	7'-1"	5 3/4"

Run Configurations



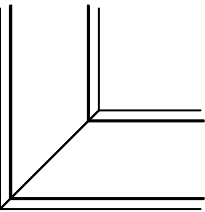
RUN LAYOUT (MOUNTING)					
LENGTH	"A-1" O.A.L.	"A-2" O.A.L.	"B" FEED POINT	"C" FROM END	"D" FEED POINT
2FT	2'-0 1/4"	2'-0"	1'-1"	5 3/4"	11"
3FT	3'-0 1/4"	3'-0"	2'-1"	5 3/4"	11"
4FT	4'-0 1/4"	4'-0"	3'-1"	5 3/4"	11"
5FT	5'-0 1/4"	5'-0"	4'-1"	5 3/4"	11"
6FT	6'-0 1/4"	6'-0"	5'-1"	5 3/4"	11"
7FT	7'-0 1/4"	7'-0"	6'-1"	5 3/4"	11"
8FT	8'-0 1/4"	8'-0"	7'-1"	5 3/4"	11"

Continuous Runs

Slot 4 LED continuous rows can be configured in 1' increments and featuring the AEL precision joiner to create a hairline seam between luminaires, providing a monolithic visual aesthetic. (see AEL joiner information on page 4). For custom run lengths less than a 1' increment, consult factory.

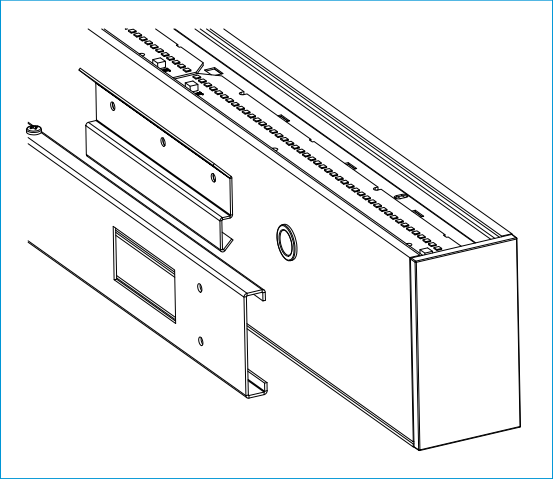
Run Patterns, Corners and Junction

Slot 4 LED patterns be configured in 1' increments with illuminated 90° inside or outside corners, with standard 2' corner junction lengths. For custom angles, corner or junction lengths, consult factory.



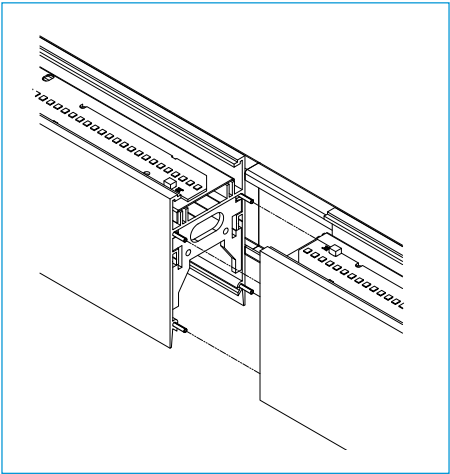
90° Corner

Mounting



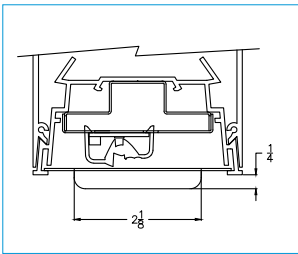
Joiners

AEL Precision Row-Mount 3-step fixture-to-fixture connection method

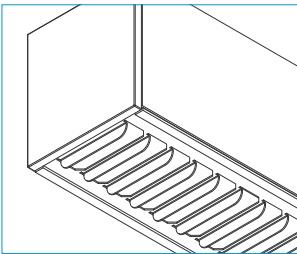


Step 1: Align

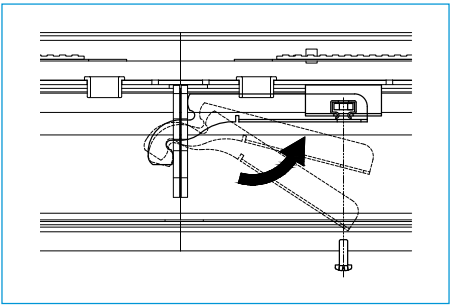
Wall Graze Shielding



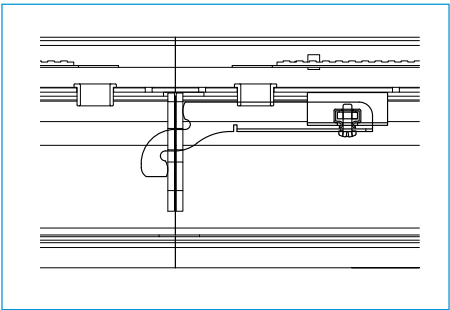
Cross Section



Louver - Painted to Match Housing



Step 2: Engage



Step 3: Lock